



WOVEN LABEL

WOVEN QUALITES

CUT & FOLDING TYPES

FINISING OF THE EDGES

SPECIAL APLICATIONS

WOVEN QUALITES



SATIN QUALITY



Detail

SUPER SATIN QUALITY



Detail

REVERSED SATIN



Detail

HI-DEFINITION QUALITY

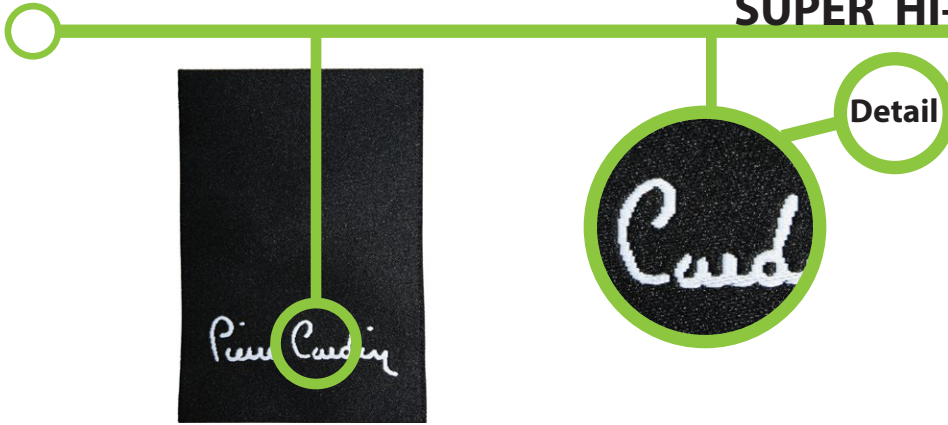


Detail

1

WOVEN QUALITES

SUPER HI-DEFINITION QUALITY



TAFFETA



TAFFETA OVER WOVEN



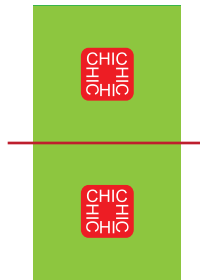
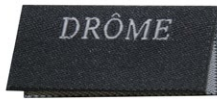
CUT & FOLDING TYPES



END FOLD LABEL



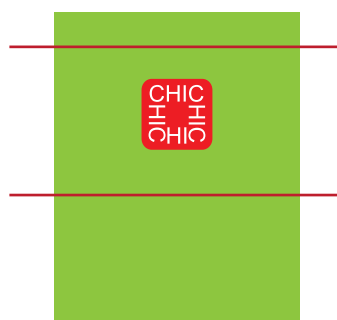
MID FOLD / CENTER LABEL



MITRE FOLD / DIAGONAL FOLD



MANHATTAN FOLD LABEL

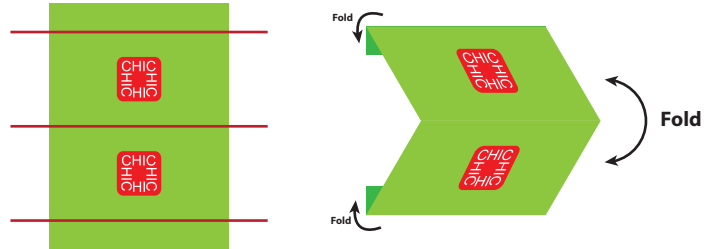


3



CUT & FOLDING TYPES

FOLDING & CUTTING



DIE CUT / CUT TO SHAPE



HOT CUT ALL AROUND



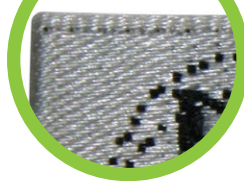
Not: This is a Hot Cut label typically for the sewer to stitch around all 4 edges. This is good for who doesn't want any folds

CUT ON ROLLS



FINISING OF THE EDGES

WOVEN EDGE / PRODUCED ON NEEDLE LOOM



Detail

ULTRASONIC



Detail

HEAT SEALED



Detail

OVERLOCKED



Detail



SPECIAL APPLICATIONS

EMBOSSSED / RASIED



LASER CUT



EMBROIDERY



THERMAL TRANSFER



SPECIAL APPLICATIONS



SUBLIMATED PRINTING



WITH SECURE YARN

UV LIGHT VIEW



Detail

PRINT LABEL



Detail

TEA STAIN

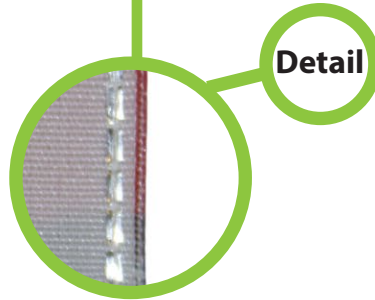
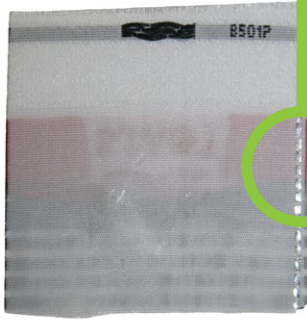


Detail

7

USED YARN QUALITY

WITH HOLOGRAM SECURE YARN



COTTON YARN



MONOFILAMENT YARN



PUFFED LABEL





Chic Textile & Metal Ltd. Co.

**Tekstil Kent Koza Plaza Oruç Reis Mah.
Tekstil Kent Cad. No. 12
Blok:A Kat:12 No:44
34235 Esenler - Istanbul
TURKEY**

E-mail: info@chic-textile.com

Web: www.chic-textile.com

Tel: +90 212 438 02 50 Fax: +90 212 438 02 52

